

WGS 84 POSITIONS can be plotted directly on this chart

© Copyright 2026. All rights reserved. No part of this product may be reproduced in any form (including photocopying or by electronic means) without prior permission.

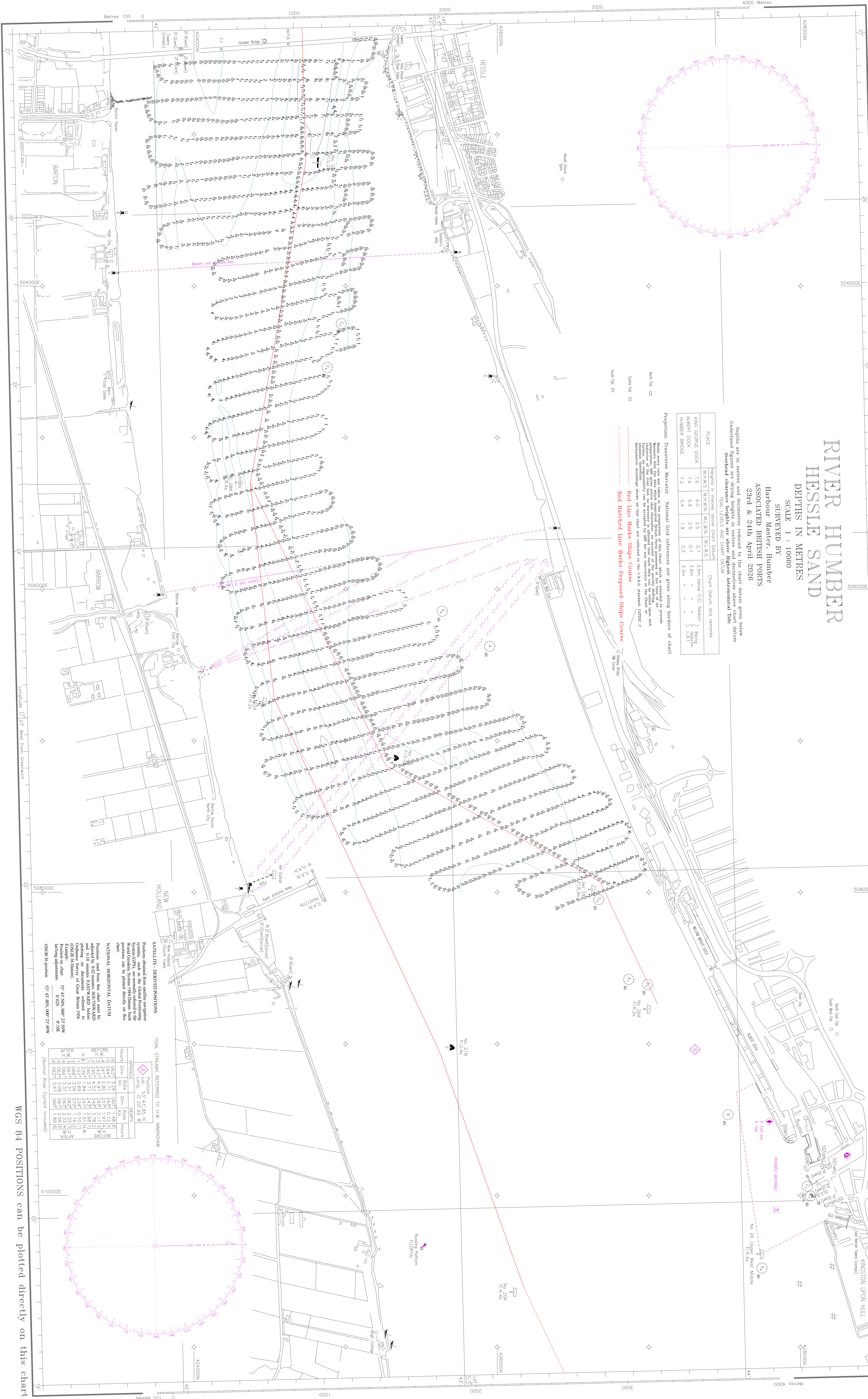
RIVER HUMBER HESSLE SAND

DEPTHS IN METRES
SCALE 1 : 10000
SURVEYED BY
Harbour Master, Humber
ASSOCIATED BRITISH PORTS
29th & 24th April 2026

Depths are in metres and decreasers reduced to the chart datum given below
Underlined figures are extreme heights are above Highest Astronomical Tide
Predicted extreme heights are above Highest Astronomical Tide
Predicted extreme low tides are below Lowest Astronomical Tide

PLACE	M.H.W.S	M.L.W.N.	M.L.W.S.	Chart Datum and remarks
KING GEORGE DOCK	7.6	6.0	2.5	0.7 3.9m below O.D. Newlyn
ALBERT DOCK	7.6	5.9	2.5	0.7 3.9m - - - - -
HUMBER BRIDGE	7.2	5.4	1.9	0.3 3.5m - - - - -

Projection: Transverse Mercator. National Grid references are given along borders of chart
Miles over, one sea mile in this projection, false position in the title of the
Publication. The false position is the distance in miles between the true position
and the position as shown on the chart. The distance in miles between the true
position and the position as shown on the chart is given in the title of the
Publication. The distance in miles between the true position and the position
as shown on the chart is given in the title of the Publication.
Red Line Marks Ships Course
Red Hatched Line Marks Proposed Ships Course



SATELLITE-DERIVED POSITIONS
Positions obtained from satellite navigation systems (GPS) are normally referred to the World Geodetic System 1984 Datum. Such positions can be plotted directly on this chart.

NATIONAL HORIZONTAL DATUM
Positions referred to this datum have been obtained from the Ordnance Survey of Great Britain 1956 (OSDB 56 Datum).
Position in datum: 53° 43' 50.00" 23° 40' 00.00"
Longitude in datum: 0025° 18' 50.00"
Datum adjustment: 53° 43' 50.00" 23° 40' 00.00"
(Normal River Current included)

TIDAL STREAMS REFERRED TO H.W. MINIMUM

Position	Lat. 53° 43' 55" N	Long. 023° 55' W
SPRINGS	0.00	0.00
BEFORE	0.00	0.00
AFTER	0.00	0.00

WGS 84 POSITIONS can be plotted directly on this chart